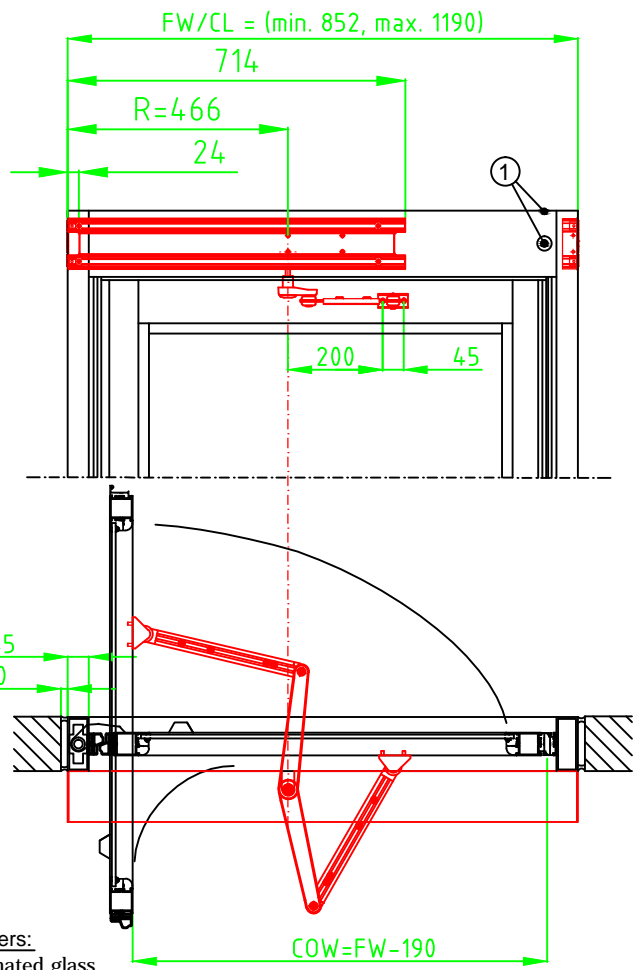
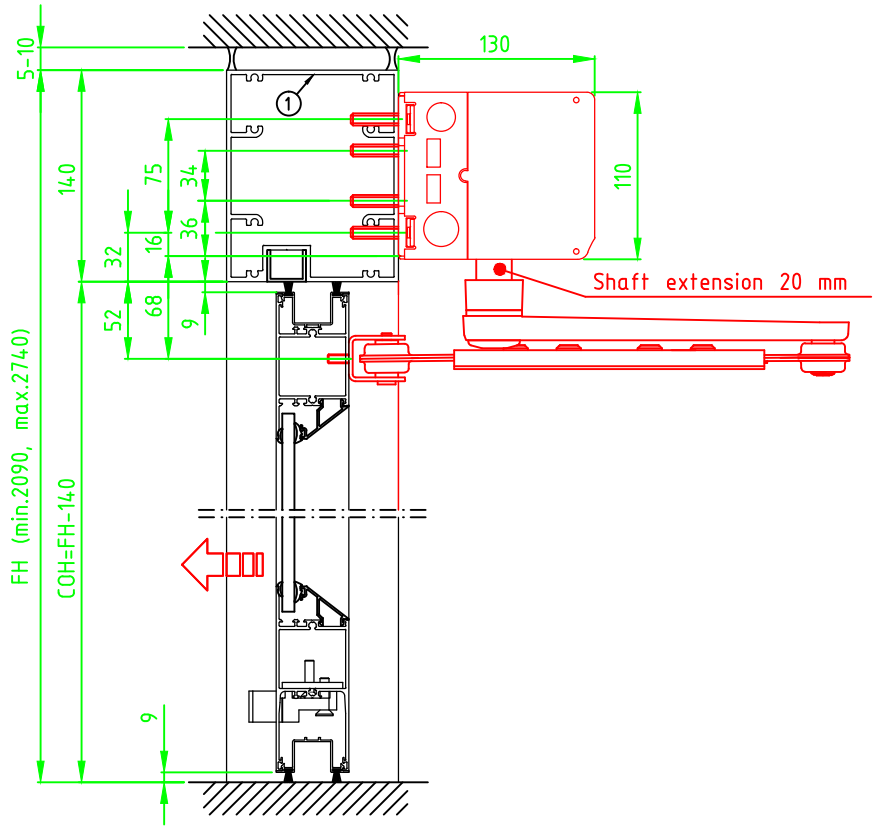


© All rights in and to this material are the sole property of ASSA ABLOY Entrance Systems AB. of the applicable company within ASSA ABLOY Entrance Systems AB. Rights reserved for changes without prior notice. Copying, scanning, alterations or modifications are expressly forbidden without the prior written consent.



**STATE WHEN ORDERING**

FW/CL = ..... mm  
 FH = ..... mm  
 COW = ..... mm  
 COH = ..... mm

Surface treatment

Silver anodized  
 Special anodized .....  
 RAL .....  
 Special powder coating .....  
 .....

- Options see layers:
- Top rail 175
  - Midrail 70, MH = ..... mm
  - Midrail 150, MH = ..... mm
  - Bottom rail 201
  - Lock LELME
  - SW100, PUSH

SW100 to be installed as pulling

Glass, see layers:

- 6 mm laminated glass
- 6 mm tempered glass
- 8 mm laminated glass
- 8 mm tempered glass
- 22 mm insulated glass

① Cable inlet

Customer:	Ref:
Door id:	Date:
Project No:	Sign:

Ref:	Date:
Date:	Sign:

**Balance door system BDS-R**  
**Swing door operator Besam SW100**  
**Arm system PUSH**

4.0
1011811-EI