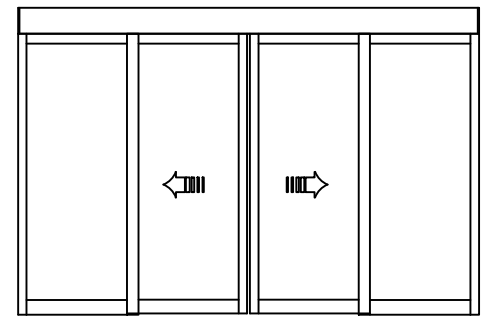
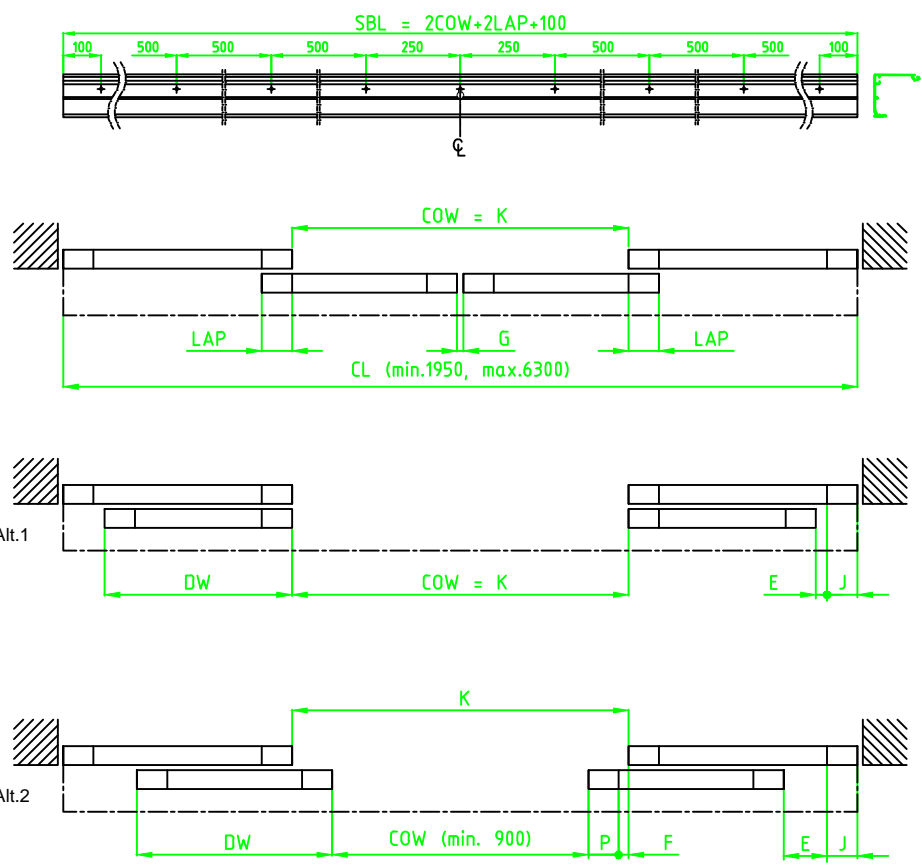
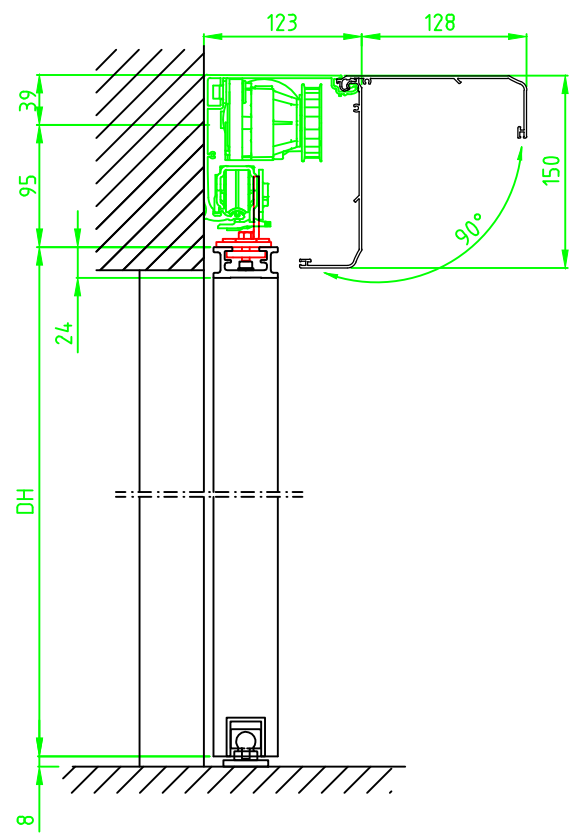


© All rights in and to this material are the sole property of ASSA ABLOY Entrance Systems AB. of the applicable company within ASSA ABLOY Entrance Systems AB. Rights reserved for changes without prior notice. Copying, scanning, alterations or modifications are expressly forbidden without the prior written consent.



**STATE WHEN ORDERING**

- COW = ..... mm
- CL = ..... mm
- SBL = ..... mm
- LAP = ..... mm
- G = ..... mm
- DW = ..... mm

Surface treatment

- Silver anodized
- Special anodized .....
- RAL .....
- Special powder coating .....
- .....

	Alt.1	Alt.2	
Overlap (min. 20mm)	LAP	LAP	..... x2 = .....
Finger protection (min. 25mm)	E	E	..... x2 = .....
Finger protection (min. 25mm)	-	F	..... x2 = .....
Jamb width (min. 30mm)	J	J	..... x2 = .....
Leading edge width	-	P	..... x2 = .....
Sum of above			Sum = .....

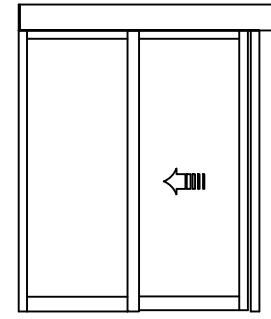
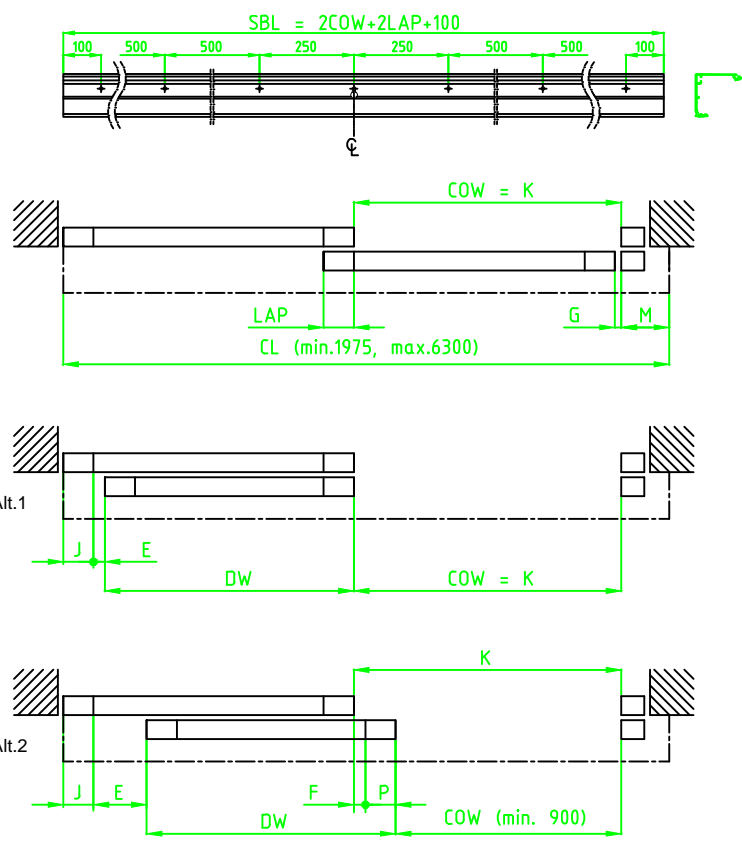
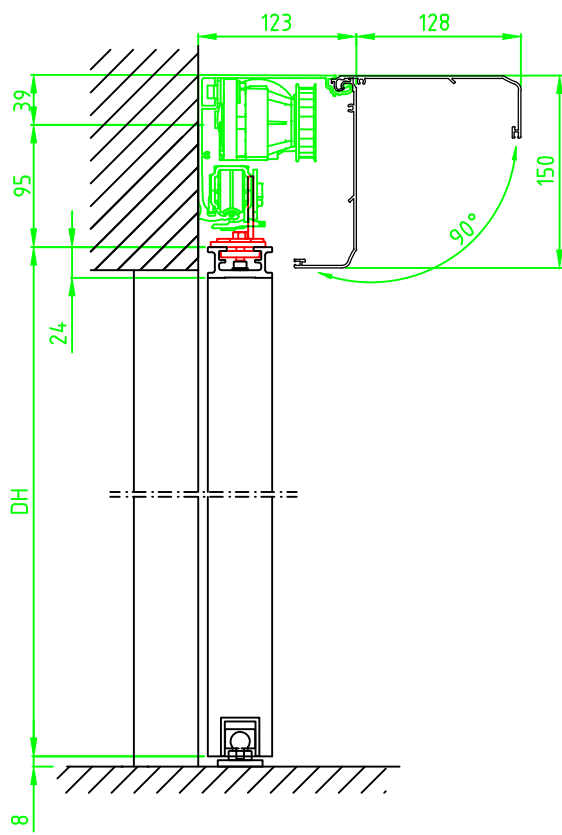
Alt.1 COW = K	K = .....	(K + 2LAP) / 2 = DW	DW = .....
Alt.2 COW + 2P + 2F = K	K = .....		DW = .....
Cover length CL	(CL ..... - Sum ..... ) / 2 = ..... = COW max.		
Door travel COW	(COW ..... x2) + Sum ..... = ..... = CL min.		

Customer:	Ref:
Door id:	Date:
Project No:	Sign:

Sliding door operator  
 Besam SL500-2  
 Art. No. 1008568

1.0
1010709

© All rights in and to this material are the sole property of ASSA ABLOY Entrance Systems AB. of the applicable company within ASSA ABLOY Entrance Systems AB. Rights reserved for changes without prior notice. Copying, scanning, alterations or modifications are expressly forbidden without the prior written consent



**STATE WHEN ORDERING**

- COW = ..... mm
- CL = ..... mm
- SBL = ..... mm
- LAP = ..... mm
- G = ..... mm
- DW = ..... mm

Surface treatment

- Silver anodized .....
- Special anodized .....
- RAL .....
- Special powder coating .....
- .....

	Alt.1	Alt.2	
Overlap (min. 20mm)	LAP	LAP	.....
Finger protection (min. 25mm)	E	E	.....
Finger protection (min. 25mm)	-	F	.....
Jamb width (min. 30mm)	J	J	.....
Cover overlap (min. 100mm)	M	M	.....
Leading edge width	-	P	.....
Sum of above	Sum = .....		

Alt.1 COW = K	K = .....		
Alt.2 COW + P + F = K	K = .....	K + LAP = DW	DW = .....
Cover length CL	(CL ..... - Sum ..... ) / 2 = ..... = COW max.		
Door travel COW	(COW ..... x2) + Sum ..... = ..... = CL min.		

Customer: \_\_\_\_\_

Door id: \_\_\_\_\_

Project No: \_\_\_\_\_

Ref: \_\_\_\_\_

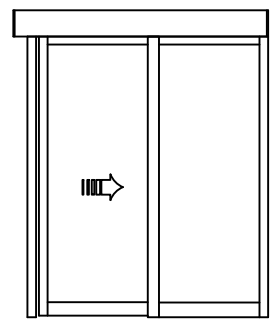
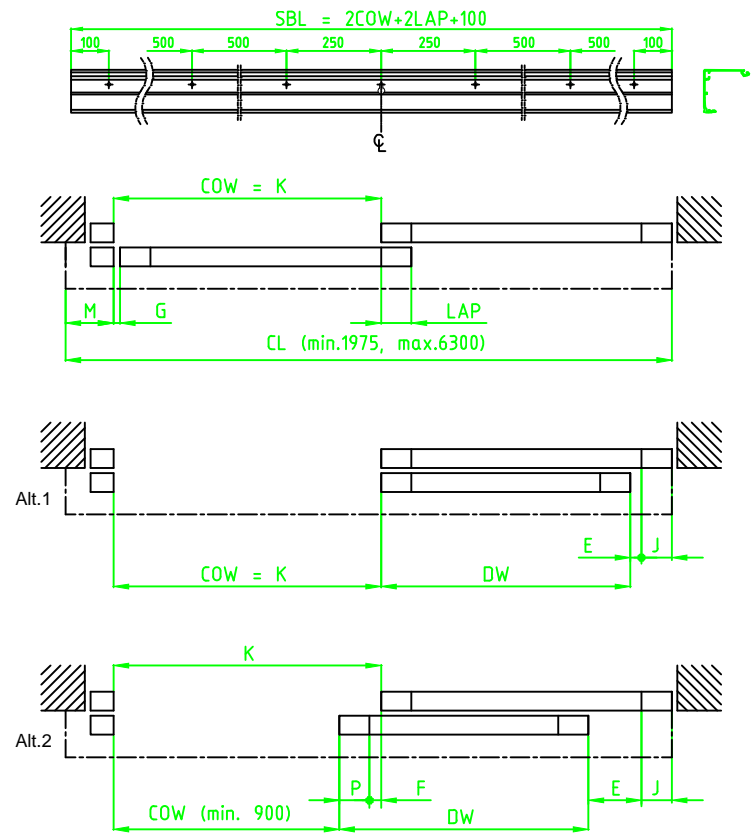
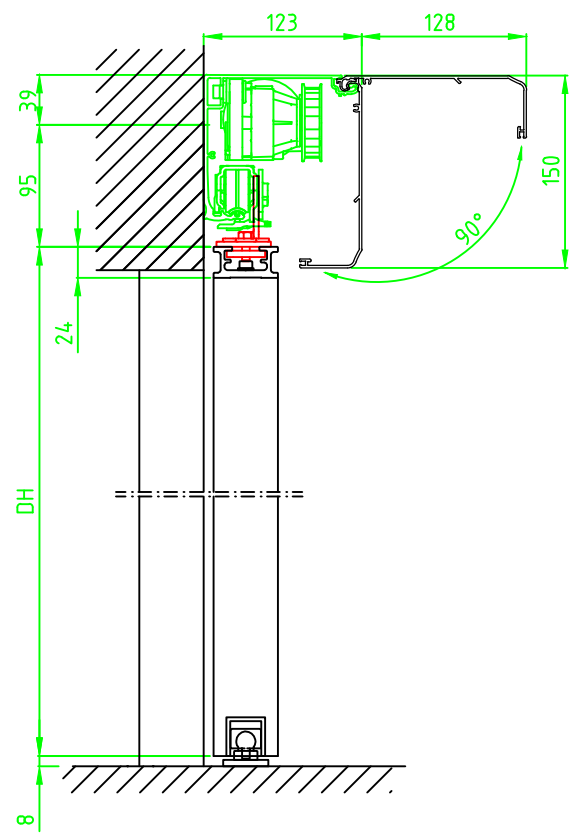
Date: \_\_\_\_\_

Sign: \_\_\_\_\_

Sliding door operator  
 Besam SL500-L  
 Art. No. 1008568

1.0
1010709

© All rights in and to this material are the sole property of ASSA ABLOY Entrance Systems AB. of the applicable company within ASSA ABLOY Entrance Systems AB. Rights reserved for changes without prior notice. Copying, scanning, alterations or modifications are expressly forbidden without the prior written consent



**STATE WHEN ORDERING**

- COW = ..... mm
- CL = ..... mm
- SBL = ..... mm
- LAP = ..... mm
- G = ..... mm
- DW = ..... mm

Surface treatment

- Silver anodized
- Special anodized .....
- RAL .....
- Special powder coating .....
- .....

	Alt.1	Alt.2	
Overlap (min. 20mm)	LAP	LAP	.....
Finger protection (min. 25mm)	E	E	.....
Finger protection (min. 25mm)	-	F	.....
Jamb width (min. 30mm)	J	J	.....
Cover overlap (min. 100mm)	M	M	.....
Leading edge width	-	P	.....
<b>Sum of above</b>	<b>Sum =.....</b>		

Alt.1 COW = K	K = .....	K + LAP = DW	DW = .....
Alt.2 COW + P + F = K	K = .....		
Cover length CL	(CL ..... - Sum ..... ) / 2 = ..... = COW max.		
Door travel COW	(COW ..... x2) + Sum ..... = ..... = CL min.		

Customer: \_\_\_\_\_

Door id: \_\_\_\_\_

Project No: \_\_\_\_\_

Ref: \_\_\_\_\_

Date: \_\_\_\_\_

Sign: \_\_\_\_\_

Sliding door operator  
 Besam SL500-R  
 Art. No. 108568

1.0
1010709